

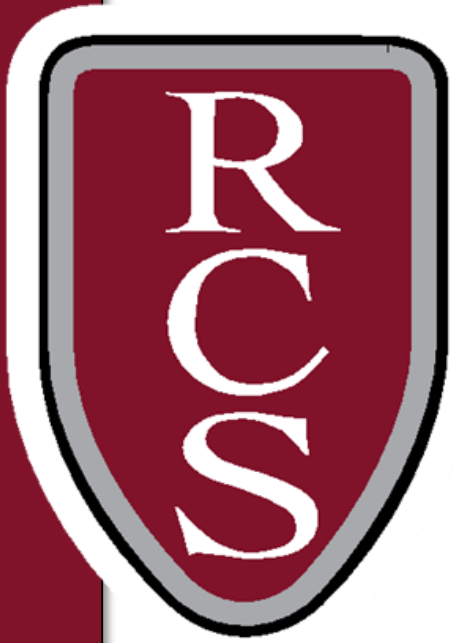
ROCHESTER COMMUNITY SCHOOLS

PRIDE IN EXCELLENCE

Board of Education Meeting

January 11, 2021





ROCHESTER COMMUNITY SCHOOLS

PRIDE IN EXCELLENCE

Learning Forward Updates

January 11, 2021



Timeline

- June 2** Dr. Shaner appointed to the governor's COVID-19 Return to School Advisory Council
- June 30** Back-to-school safety requirements released in MI Safe Schools: Michigan's 2020-21 Return to School Roadmap.
- July 27** Members of the RCS task force present complexities and contingencies surrounding learning options during a Board of Education work session.
- July 28** Community town hall meetings address districtwide feedback with input provided through ThoughtExchange.
- Aug. 5** Families are notified that in-person learning will temporarily begin in a remote-learning environment. "Our vision is to transition back to in-person learning as conditions allow. We anticipate being in the remote environment until October 1."
- Aug. 15** School districts are required to submit a Preparedness and Response Plan for the 2020-21 school year, approved by the local school district board and then posted on the website.
- Aug. 20** School districts are required to submit an Extended COVID-19 Learning Plan to the state by Oct. 1 (in addition to the Preparedness and Response Plan) that has been approved by the Board of Education.
- Aug. 26** School-age care needs assessment provided to the community.



Timeline: Phased-in Approach to In-person Learning

- Sept. 1** RCS students start school remotely (for in-person instruction) or in the RCS Virtual Campus.
- Sept. 3** MHSAA reinstated fall sports / RCS phased in high-school athletics, starting Sept. 8.
- Sept. 14** Special Education teams begin offering in-person student evaluations within the week.
- Sept. 21** Middle school athletics resume within the week.
- Sept. 22** General education pre-K programs begin.
- Sept. 28** RCS presents the district's extended COVID-19 Learning Plan to the Board for approval.
- Oct. 5** Some students enrolled in special education programs attend half day, starting Oct. 5. Programs include Early Childhood Special Education (ECSE), Autism Spectrum Disorder (ASD), Cognitive Impairments (CI), Severe Multiple Impairments (SXI), Emotional Impairments (EI), and Adult Transition Programs and Services (ATPS).
- Oct. 8** Elementary students attend half day by cohorts. Cohort A: Half-day, in-person instruction; Cohort B: Asynchronous learning.
- Oct. 9** Elementary students attend half day by cohorts. Cohort A: Asynchronous learning; Cohort B: Half-day, in-person instruction.
- Oct. 12** All elementary and middle school students return full day by cohort. Some special education students enrolled in ASD, CI, SXI, and EI programs attend full day.
- Oct. 14** High-school seniors attend for SAT testing.
- Oct. 19** All high school students attend by cohort.
- Oct. 26** Facility rentals begin, starting with swimming pools.



Timeline

- Oct. 26** RCS presents the district's extended COVID-19 Learning Plan to the Board for approval.
- Nov. 2, 3, 11, 12, 17** Technology device deployment
- Nov. 5** Students enrolled in transitional kindergarten through 12th grade (TK-12) in-person learning, ECSE, and ATPS return to an enhanced remote learning environment due to the Oakland County Health Division (OCHD) risk level determination. In-person enrichment programs pause until in-person learning resumes. Pre-K programs pause.
- Nov. 9** In-person pre-K programs resume.
- Nov. 15** MDHHS announced new statewide restrictions: Public and private high school students will learn in a remote environment from Nov. 18 through Dec. 8. All organized sports and extra-curricular activities will be postponed Nov. 16 through Dec. 8. This includes all in-person activities at the middle- and high-school levels.
- Nov. 18** COVID-19 Preparedness Response Plan is revised to reflect new guidance from the Michigan Occupational Safety and Health Administration (MIOSHA) regarding remote work.
- Nov. 19** RCS informs families that the district will continue to serve children in a remote learning environment through Friday, Jan. 15, 2021.
- Nov. 30** RCS presents the district's extended COVID-19 Learning Plan to the Board for approval.
- Dec. 14** RCS presents the district's extended COVID-19 Learning Plan to the Board for approval.
- Jan. 8** MDHHS provides guidance for school district to offer in-person learning options by March 1, 2021.
- Jan. 11** RCS presents the district's extended COVID-19 Learning Plan to the Board for approval.



OCHD Guidance

Oakland County Health Division
(OCHD)

Guidance for in-person instruction

Received Sept. 24, 2020

COUNTY LEVEL RISK DETERMINATION

SCHOOL BUILDING SPREAD INDICATORS			
	No cases in school building	Building(s) with known cases in staff or students but no ongoing transmission	Building(s) with evidence of ongoing transmission
LOW RISK	In person allowed with mitigation measures	In person allowed with strict mitigation measures after cleaning/contact tracing	In person allowed with strict mitigation in affected buildings with cases after an appropriate pause
A	In person allowed with strict mitigation measures	In person allowed with strict mitigation measures after cleaning/contact tracing	In person allowed with strict mitigation in affected buildings with cases after an appropriate pause
B	In person allowed with strict mitigation measures	In person allowed with strict mitigation measures after cleaning/contact tracing	Consider reduced density in affected buildings with cases after an appropriate pause
C	In person allowed with strict mitigation measures	Consider reduced density in affected buildings after cleaning/contact tracing	Consider reduced density in affected buildings with cases after an appropriate pause
D	Consider reduced density allowed with strict mitigation measures	Consider reduced density affected buildings after cleaning/contact tracing	Consider remote instruction in the affected building for 28 days
E	Consider pausing (14 days) in person instruction in entire district to discuss protection strategies including but not limited to testing	Consider remote instruction in entire district	Consider remote instruction in entire district

● <7 cases per million;
<3% percent positivity

● 7 to <20 cases per million;
3 to <7% percent positivity

● 20 to <40 cases per million;
7 to <10% percent positivity

● 40 to <70 cases per million;
10 to <15% percent positivity

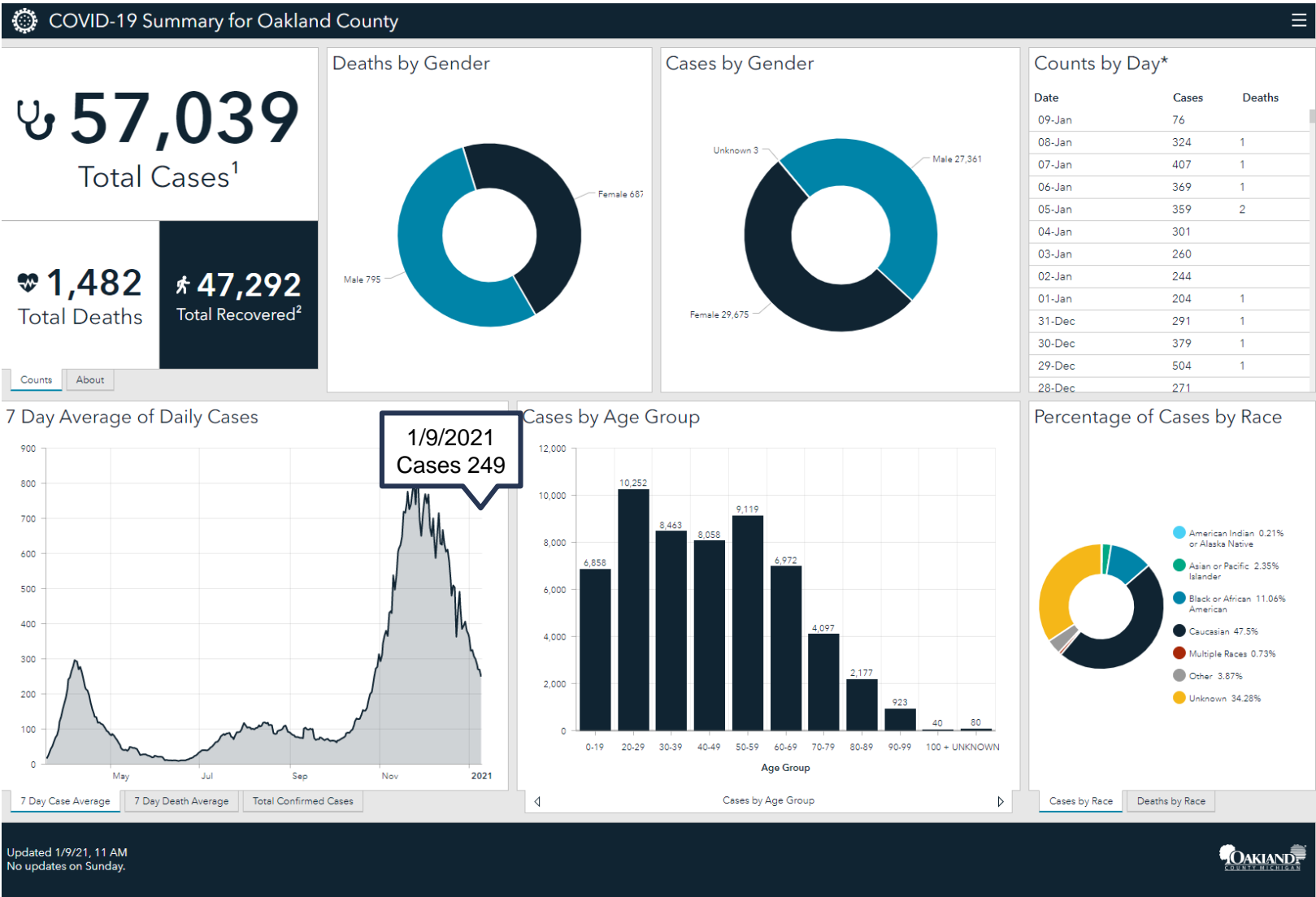
● 70 to <150 cases per million;
15 to <20% percent positivity

● 150 or greater cases per million;
20 or greater percent positivity



COVID-19 Summary for Oakland County

January 9, 2021





COVID-19 Oakland County Schools Weekly Report

January 6, 2021

Reporting period: December 23 – January 5			
METRIC	RESULT	Trend	DEFINITION
Total “Confirmed and Probable” COVID-19 Cases Reported in Oakland County	3627	→	“Confirmed”: laboratory-confirmed positive molecular viral test “Probable”: rapid-antigen positive viral test
Cases/Day per Million Population 7-Day Average 14-Day Average	207 215	↑	Average number of cases per day per million population over the given timeframe
14-Day Average Daily Case Counts	259	→	The average number of cases per day reported over the last 14 days of the reporting period
14-Day Average Daily Death Counts	0.36	↓	The average number of deaths per day reported over the last 14 days of the reporting period
14-Day Average Tests Per Day	3882	↓	The average number of diagnostic tests administered to Oakland residents over the last 14 days of the reporting period
Percentage of Cases Hospitalized in the Last 14 Days	2.1%	→	The percentage of cases (confirmed and probable) that reported being hospitalized over the last 14 days of the reporting period
Percent Positivity (7 days)	9.02%	↑	Percentage of reported positive tests over the last 7 days (December 29 – January 4)
Percent Positivity (28 days)	9.12%	↓	Percentage of reported positive tests over the last 28 days (December 8 – January 4)
Healthcare Capacity Strength	STABLE	→	Assessment of bed availability and hospital capacity
Testing, Tracing, Containment Infrastructure	STRONG	→	Assessment of testing availability and OCHD contact tracing capability
County Level Risk Determination	E	→	County level risk determination based on state guidance. Local epidemiology is also a factor in school and district-specific decision making

Weekly COVID-19 Report

Oakland County Schools



Total Oakland County Cases Reported by Age Group					
Age Group	Total Cases	Trend	Age Group	Total Cases	Trend
0-4	58	↗	50-59	578	↗
5-9	51	↘	60-69	403	→
10-13	78	→	70-79	232	→
14-18	196	↗	80-89	154	→
19-29	718	↗	90+	64	→
30-39	600	↗	Unknown	15	
40-49	479	→			

The number of reported cases remained stable, with a slight increase of 220 cases. Percent positivity over the last 7 days increased just over 1%. The percentage of cases hospitalized remained stable at 2.1%. The number of tests per day decreased by 546 tests. Healthcare capacity remained stable.



MDHHS COVID-19 Vaccine



**MDHHS goal:
To have 70% of Michigan adults
over age 16
vaccinated as quickly as possible**

“A vaccine to prevent COVID-19 is the best hope for ending the pandemic.”
~MDHHS

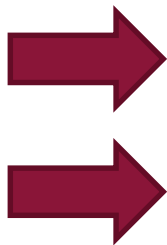
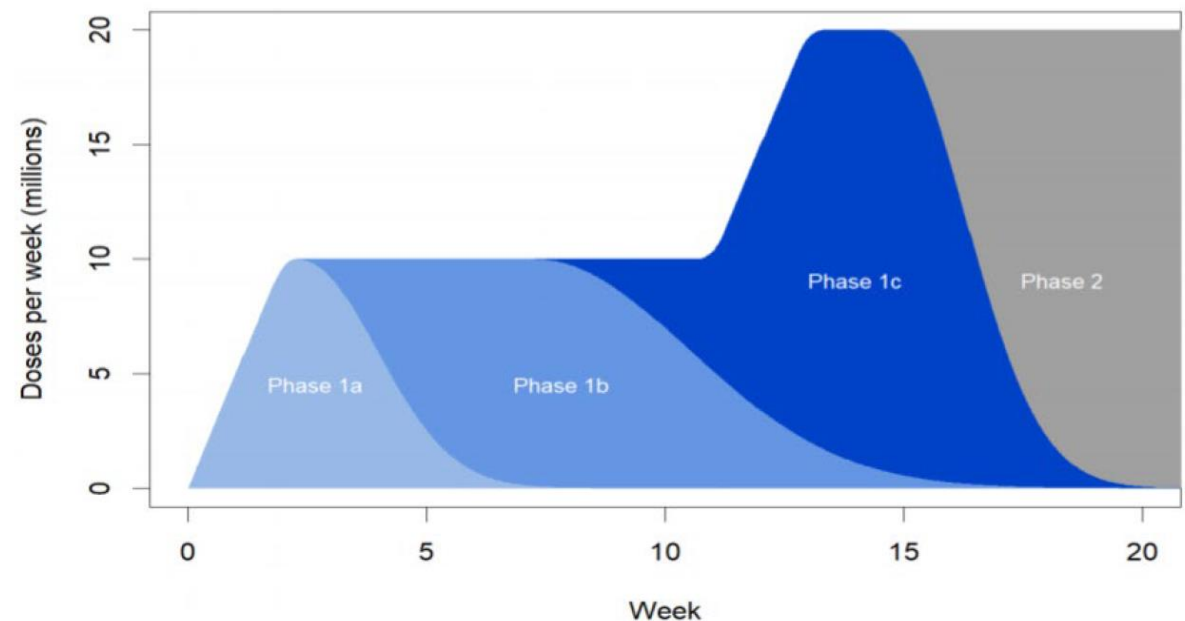
Spread *Hope*
NOT COVID



COVID-19 Vaccine Goal and Approval Process



Michigan Department of
Health & Human Services



Phase 1a:	Health care professionals and Long-term Care Facility (LTCF) residents to include Occupational Therapists, Physical Therapists, and Speech Therapists
Phase 1b:	Essential workers such as education sector , food and agriculture, utilities, police, firefighters, correction officers, and transportation
Phase 1c:	Adults with high-risk medical conditions
Phase 2:	Others



COVID-19 Vaccine Supply

- Oakland County educators, pre-K – grade 12, may now register for a COVID-19 vaccination appointment; however, the OCHD currently has a limited vaccine supply.
- Availability is expected to increase in the coming weeks and months, and appointment access will increase accordingly.
- We will continue to keep our community informed of any updates.



New MDHHS Guidance for In-person learning



Goal: To have all Michigan school districts offer an in-person learning option for students no later than March 1.*

* Guidance is as of January 8, 2021



MDHHS Infection Control Recommendations



- ✓ When feasible, assign children to cohort groups and limiting their interactions to their cohorts to reduce the number of contacts.
- ✓ Keep individuals six feet from one another to the extent feasible, with creative use of school spaces to facilitate distancing.
- ✓ Provide adequate hand sanitizing supplies and reinforcing proper handwashing techniques.
- ✓ Improve air ventilation.
- ✓ Have staff and students conduct self-screenings for symptoms at home every day before going to school.
- ✓ Ensure school plans are in place in coordination with local health departments if there are any positive COVID-19 tests.
- ✓ Have staff and students who either test positive or are close contacts of those who test positive follow the guidance issued by MDHHS as well as local health departments. Anyone who is considered a close contact of someone who tests positive but does not have symptoms should quarantine for at least 10 days under CDC guidance.



RCS Proposed Timeline

We remain committed to our extended COVID-19 Learning Plan.

At this time, students can plan to return to in-person learning by cohorts using the following phased-in approach:

- **Jan. 25: Elementary and some special education populations**
- **Feb. 1: Middle school**
- **Feb. 8: High school**

Key considerations include safety, learning content, contact time, food services, transportation, staffing, and stability, along with federal, state and local guidance.

This hybrid model was never meant to be a long-term solution. We are hopeful that many of our populations will progress to full-day, in-person instruction.

All plans remain flexible depending on conditions. We will continue to monitor the impact of COVID-19 cases within the district so our teams can effectively serve our students.

The safety of children and adults remains our priority.



Committee Conversations for Hybrid Improvements

Elementary

- Maximize synchronous time
- Improve asynchronous instruction
- Implications with a schedule change

Secondary

- Update and change daily schedule to limit the amount of time students are maskless. This may include dismissal at 11:50 a.m.; however, a grab-and-go lunch will still be available.
- Add teacher contact time in the afternoon for the opposite cohort.
- Provide clear expectations and communication for students and staff on Wednesday.
- Provide additional professional development time and clarity on technology that impact on curriculum and instruction.

Special Education

- Update and change daily schedule. Add contact time in the afternoon for asynchronous students.
- Provide clear expectations and communication for students and staff on Wednesday.



Participation Rates

By law, we are required to report participation rates, even when school is not in session. As such, there is a time period during the holiday break where there is a report of zero participation.

Participation rates are determined from Wednesday to Tuesday.

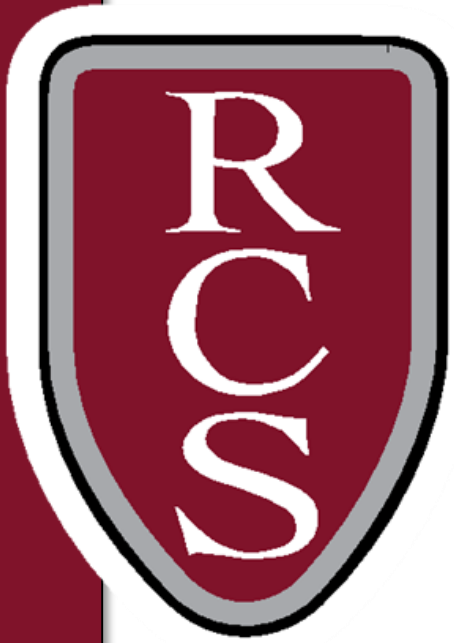
Preliminary Participation Rates

- Nov. 25 – Dec. 1, participation rate: 92.6% (includes partial holiday break)
- Dec. 2 – 8, participation rate: 97.1%
- Dec. 9 – 15, participation rate: 97%
- Dec. 16 – 22, participation rate: 93.4% (includes partial holiday break)
- Dec. 23 – 29, participation rate: 0% (includes holiday break)



Assessments

- All elementary students will participate in benchmark assessment no matter the learning environment.
- Benchmark reading assessments can be done using Literacy Footprints digital reader assessment tools, or with Fountas & Pinnell kit and a document camera.
- iReady diagnostic is used as one piece of data to drive instructional decisions and also provide data on students' progress toward growth goals. On Dec. 14, elementary students received access to the math learning platform with support links.
- Formative assessments guide instruction: Best practice is for teachers to do frequent, ongoing formative assessment. Literacy Footprints digital reader and Epic are two resources teachers use for collecting data through informal running records or by observing reading behaviors in a one-to-one conference or small group setting. Teachers choose the platform that best meets their goals for digging deeper into a particular student or student group's needs.
- At the secondary level, we continue to work with MDE to collaborate and update processes. iReady assessments will be added at middle school level. MSTEP will be provided to 6th and 7th graders; the PSAT will be provided to 8th, 9th, and 10th graders; and the SAT will be given to 11th graders. All tests will be taken in April/May timeframe.
- At the BOE work session on Jan. 25, we will be discussing our continuous improvement model and student achievement data.



ROCHESTER COMMUNITY SCHOOLS

PRIDE IN EXCELLENCE

Questions?