



## Bond projects enhance every school

### Building a legacy for the future

In November 2015, the community overwhelmingly voted to invest in our schools and school facilities by approving a \$185 million bond proposal that will fund critical infrastructure and technology enhancements and will improve student safety and school security. The bond projects will span over a five-year period of time, which means the work needed to help fulfill our community's legacy for future generations is just beginning. Moving forward, every action will be deliberate, strategic, and focused on safety and efficiencies throughout our district.

During construction, every precaution will be taken to ensure the safety of our children and staff. Environmental conditions, such as dust and noise levels and air and water quality, will be carefully monitored. A fence will be built around the perimeter of each construction site, and temporary fire walls will be built in the schools in order to keep work zones separate from occupied areas. Traffic flow and parking areas will also be clearly marked and defined. At no time will students be left alone with a construction worker or team; however, workers are still required to comply with proper screening protocols. All workers will be issued a photo identification badge.

**The bond projects will span over a five-year period of time, which means the work needed to help fulfill our community's legacy for future generations is just beginning.**

the existence, operation and management of an enterprise IT environment. The IT infrastructure is not glitzy, but it is critical to our success. Through the bond efforts, we are working to design and implement a robust, state-of-the-art wired and wireless network that is engineered for speed, coverage and density, and allows for all of our systems to work together. (continued)



### A message from the Superintendent

It's an exciting time for Rochester Community Schools. The financial health of our district remains strong. In June, the Board adopted a balanced budget that is sustainable, promotes growth, and maintains high quality student programs. Work on our bond projects has also begun, and we are pleased to report that all 21 schools and district facilities will be impacted by the efforts in some way within the first year.

Each year, I find myself in awe over the number of outstanding graduates that our district continues to produce. Starting with their early elementary education, our students have been provided with a solid educational foundation which has been carefully nurtured and cultivated over the years. It is gratifying to see these children grow into young adults with kind hearts, bright futures, and the ambition to change the world. Their achievements are a result of family, school, business and community partnerships, and I hope you feel the pride that I feel every day.

It is truly an honor to work among community members who place such a high value on education and have elected to invest in our children's future. Thank you for your continued support of the Rochester Community School District.

Robert Shaner, Ph.D.

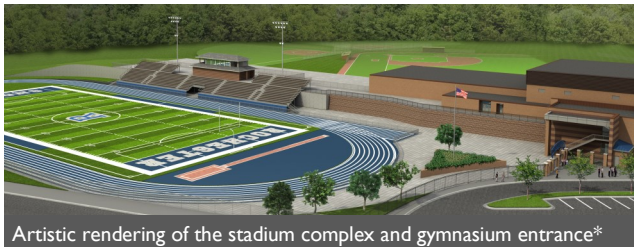
# 2016-17 Bond Projects

## Safe and Secure Entrances

Providing safe and secure entrances at our schools remains a top priority for the district. The main building entrances will be redesigned with two sets of vestibule doors, along with an immediate passage to the office, a better visitor verification system, and lock-down capabilities. Buildings slated for summer-time security renovations are: Long Meadow, McGregor, Meadow Brook, North Hill, Hart, Reuther, Van Hoosen, and Stoney Creek.

## Rochester High School

Rochester High School is slated to benefit from renovation projects which align with the pre-bond scope of work. Improvements include securing the main entrance, renovating the media center, replacing skylights, resurfacing the parking areas, and expanding the performing arts lobby and band and choir room—just to name a few.



## Information Technology

Information Technology projects include providing network and wireless updates, a firewall addition, network storage area and virtual environment expansion, video camera security cabling, content filtering appliance replacement, secure entry technology, and adding and replacing school bus technology. Curriculum will drive our technology decisions. Once priorities are further defined, we will direct our efforts to determine the types of systems, such as computers, projectors, and other devices, which are best suited for our needs. The goal is to begin piloting some of these technologies in the fall of 2016.



The stadium will be expanded to include an eight-lane track with seating for 1,800 home guests and 750 visitors and enhanced accommodations for those with special needs. Since major site work is required for the stadium complex, the athletic field and track will not be ready for fall sports, so Rochester Falcons home events will be held at other facilities for the season.

## Site Improvement

Demolition of the building which once served as the Brooklands School and the Rochester Alternative & Adult Center for Education began on June 27 and is scheduled to continue through mid-August. Once demolition is complete, the site will be graded; grass will be planted; sidewalks and parking lots will be preserved; and students will return to clean, safe, enhanced school grounds in September.

## Musson and Hugger Elementary Schools

Musson and Hugger Elementary are also scheduled to receive interior renovations and building additions which will accommodate flexible learning spaces and larger classrooms. Pre-K areas will also be incorporated into Musson's building plans and portable units will be removed. Construction efforts will be strategically scheduled in phases, starting in the fall of 2016, to provide the least amount of disruption to the classroom as possible.



Building additions at Musson and Hugger Elementary Schools will help promote equity across the district.\*

**Want to learn more?** If you would like to learn more about the school bond projects, please visit our website at [www.rochester.k12.mi.us](http://www.rochester.k12.mi.us) and click on the "School Bond Information" tab.

\* Actual construction may appear different than the artistic renderings.





# China trip expands global perspectives

“Once your eyes are open to new cultures, suddenly your world opens to new experiences. Travel broadens the mind,” said Rochester Adams High School Student Michael Berry. Berry was one of 15 eighth and ninth-grade students who accompanied six staff members on the district’s inaugural trip to China.

The trip was an outgrowth of the district’s strategic plan which identified global awareness as one of three main goal areas. “We want RCS students to be empowered global stewards who think critically, are champions for diversity, and are inspired to make a positive impact on the world,” said Executive Director of Elementary Education Michael Behrmann.

The students spent 10 days immersed in the language and culture of the world’s



second largest economy. They stayed overnight with Chinese host families and same-age peers, which allowed them to experience student-life in a very different way.

“The experience was transformational,” said Van Hoosen Middle School Principal Dan Mooney. “We all have richer, more informed perspectives that we will continue to share with our colleagues and classmates at home.”

RCS established a partnership with a school district in Zhangjiagang, a city located about 200 miles from Shanghai.

Prior to departure, students in Rochester met with students at Jiansu Liangfeng Middle School via Skype sessions. “Students had the opportunity to practice

“This trip not only challenged our students to serve as cross-cultural ambassadors, but it also provided the district with the foundation to develop future international opportunities for our students.”  
Robert Shaner

their foreign language skills using technology interfaces, and they began establishing international relationships and friendships that will serve them well into the future,” said Behrmann.

Chinese host families escorted their American guests to school where students participated in English and Chinese lessons, practiced calligraphy and paper cutting, and engaged in discussions about global economics and folk music. Rochester staff members led professional development discussions related to visual thinking and teaching methods, and cemented relationships for future international exchanges.

Mooney said a highlight of the trip was watching the RCS and Liangfeng students collaborate to create a cultural graffiti wall that incorporated artwork and themes from both cultures. The painted display remains on the grounds of the Chinese middle school as a reminder of their friends in America.

Rochester students were happy to negate the stereotypes that Chinese students had about America. “Before meeting us, they thought our schools were easy, that we

never had homework, and that we ate hamburgers at every meal,” said Berry. “On the other hand, we were fascinated to learn firsthand how Chinese students respect their elders, value education, and have very high expectations placed on them by their families.”

At the closing ceremony, the group presented Liangfeng with an RCS flag, a Rochester Hills flag, and a proclamation from Rochester Hills Mayor Bryan Barnett. One Chinese host-student said to her RCS guests, “Now you know more about Chinese history, and I know new friends.”

The district’s cultural awareness efforts will continue in many ways. RCS is growing its international student-



exchange program, exploring additional travel opportunities to multiple countries, encouraging cultural studies, and expanding world languages through the K-12 curriculum.

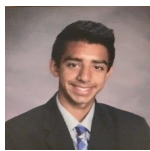
“This trip not only challenged our students to serve as cross-cultural ambassadors, but it also provided the district with the foundation to develop future international opportunities for our students,” said Superintendent Robert Shaner, Ph.D. “By increasing our children’s cultural awareness, we can inspire them to have a positive impact on our community and our world.”



# RCS Scholars of Highest Distinction

GPA 3.9 or higher - Four Advanced Placement® Courses - ACT Score of 32 or higher

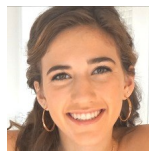
\* **National Merit Scholars** scored in the top 1% of students nationwide on the Preliminary SAT/National Merit Scholarship Qualifying Test



**Ali Ahmed**  
Adams  
Univ. of Michigan



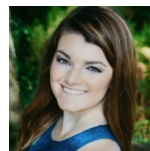
**Zainab Ahmed**  
Rochester  
Univ. of Michigan



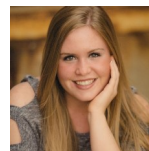
**Elizabeth Amici**  
Stoney Creek  
Georgia Tech



**Meridith Anness**  
Rochester  
Univ. of California



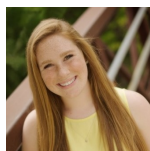
**Danielle Belanger**  
Stoney Creek  
Univ. of Michigan



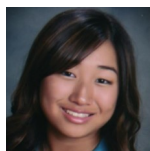
**Madison Burgin**  
Adams  
Univ. of Michigan



**Rachel Butala \***  
Rochesterr  
Wayne State



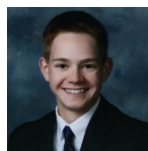
**Rachel Butler**  
Stoney Creek  
Michigan State



**Andi Chaloult \***  
Adams  
Pomona College



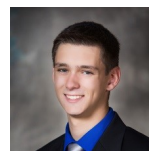
**Nikita Chitnis**  
Adams  
Univ. of Michigan



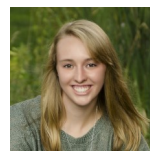
**Ryan Coopmans**  
Adams  
Missouri Univ.



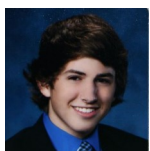
**Claudia Cornejo**  
Adams  
Univ. of Michigan



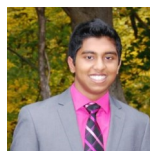
**Kevin Cremonesi**  
Rochester  
Kettering Univ.



**Madeline Davis \***  
Adams  
Univ. of Michigan



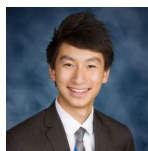
**Jacob DeGasperis \***  
Stoney Creek  
Univ. of Michigan



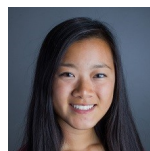
**Anup Diwakar**  
Stoney Creek  
Univ. of Michigan



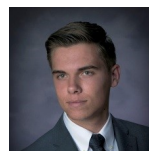
**Claire Dolot**  
Adams  
Univ. of Michigan



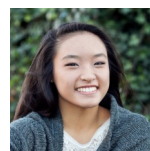
**Nicholas Dong**  
Adams  
Univ. of Michigan



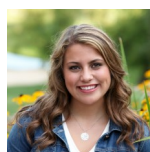
**Joanne Du**  
Adams  
Univ. of Michigan



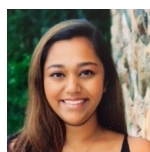
**Daniel Fergle**  
Adams  
Univ. of Michigan



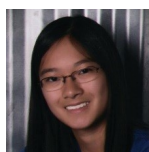
**Allison Gu \***  
Stoney Creek  
Univ. of Michigan



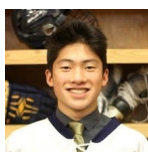
**Audrey Guest**  
Adams  
Michigan State



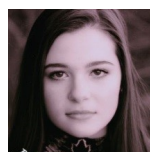
**Trisha Gupta \***  
Rochester  
Univ. of Michigan



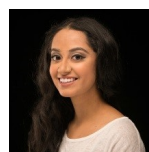
**Rachel Hsu \***  
Rochester  
Univ. of Michigan



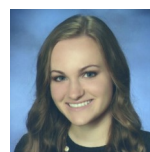
**Kevin Hu**  
Adams  
Univ. of Michigan



**Jamieson Hunter**  
Adams  
Univ. of Michigan



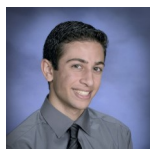
**Divyashri Iyer**  
Rochester  
Michigan State



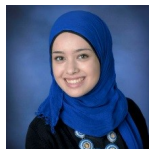
**Amanda Jacobs**  
Stoney Creek  
Univ. of Michigan



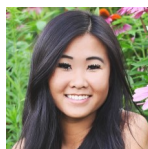
**Jason Jin \***  
Adams  
Univ. of Michigan



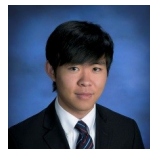
**Connor Karmo**  
Rochester  
Oakland Univ.



**Javeria Khan**  
Adams  
George Wash. Univ.



**Amanda Kim**  
Stoney Creek  
Univ. of Michigan



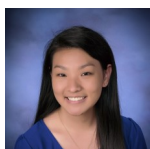
**Jaeyoon Kim**  
Adams  
Univ. of Michigan



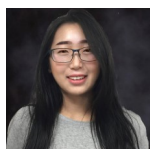
**Sydney Kleber**  
Adams  
Univ. of Michigan



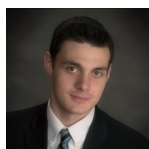
**Jamie Lai**  
Stoney Creek  
Univ. of Michigan



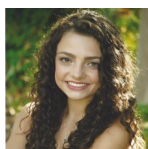
**Vanessa Lee**  
Adams  
Univ. of Michigan



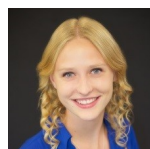
**Grace Liu \***  
Adams  
Univ. of Michigan



**Brendan Lount \***  
Stoney Creek  
Univ. of Michigan



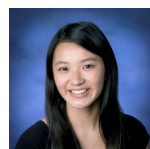
**Melanie Madek**  
Stoney Creek  
Univ. of Auburn



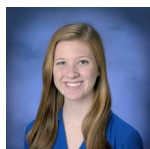
**Sophia Mai**  
Stoney Creek  
Univ. of Michigan



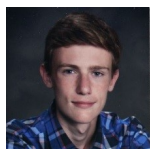
**Nishitha Malugari**  
Adams  
Univ. of Michigan



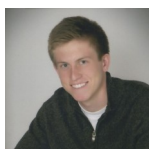
**Emily Mao**  
Stoney Creek  
Univ. of Michigan



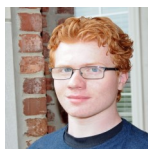
**Kelly Martin**  
Adams  
Grand Valley State



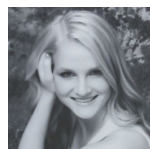
**Ryan Mayer**  
Adams  
Michigan State



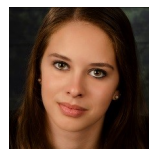
**Connor McDewitt**  
Adams  
Undecided



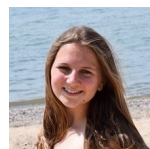
**Jeffrey McNelis**  
Adams  
Emory College



**Anna Miller**  
Adams  
Univ. of Michigan



**Jamie Miller**  
Adams  
US Naval Academy

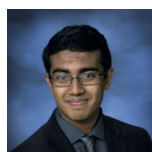


**Molly Moening**  
Stoney Creek  
Oakland Univ.

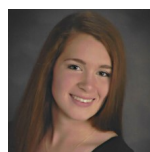
# RCS Scholars of Highest Distinction

GPA 3.9 or higher - Four Advanced Placement® Courses - ACT Score of 32 or higher

\* **National Merit Scholars** scored in the top 1% of students nationwide on the Preliminary SAT/National Merit Scholarship Qualifying Test



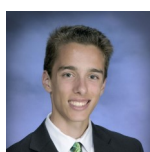
**Nitesh Mohan \***  
Adams  
Univ. of Michigan



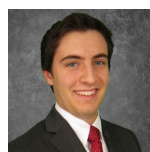
**Jennifer Moss**  
Stoney Creek  
Univ. of Michigan



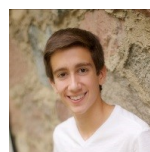
**Adrian Munteanu**  
Stoney Creek  
Univ. of Michigan



**Nicolas Napoleone \***  
Stoney Creek  
Univ. of Michigan



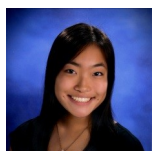
**Robin Onsay**  
Adams  
Michigan State



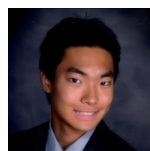
**Jean-Pierre Ortiz**  
Stoney Creek  
Oakland Univ.



**Roi Orzach**  
Adams  
Univ. of Michigan



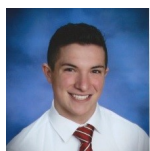
**Erika Ouchi**  
Adams  
Univ. of Michigan



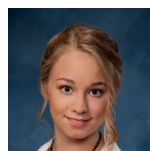
**Takahiro Ouchi**  
Adams  
Univ. of Michigan



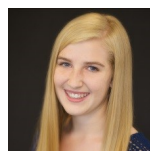
**Jae Min Park \***  
Adams  
Univ. of Michigan



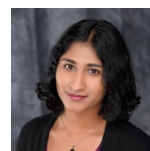
**Garrett Perozich**  
Rochester  
UCLA



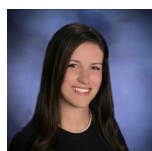
**Emma Persson**  
Stoney Creek  
Leiden Univ.



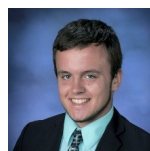
**Julia Philp**  
Stoney Creek  
Univ. of Michigan



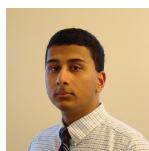
**Sudharshna  
Radhakrishnan**  
Rochester  
Univ. of Michigan



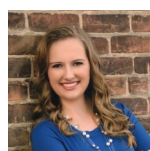
**Elena Romund**  
Adams  
Univ. of Michigan



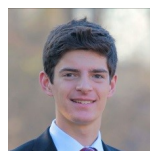
**Christopher Russell**  
Rochester  
Oakland Univ.



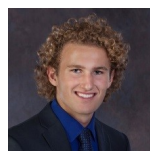
**Debjit Sarkar \***  
Adams  
Michigan State



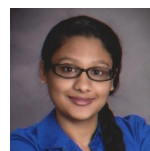
**Sydney Sass**  
Adams  
Grand Valley State



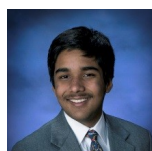
**Matthew Schiller**  
Adams  
Ohio State



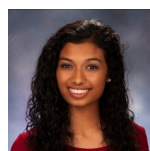
**Joseph Schuler**  
Rochester  
Univ. of Michigan



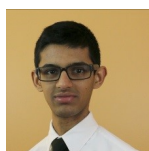
**Saniyah Shaikh \***  
Adams  
Univ. of Pennsylvania



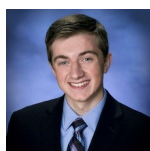
**Anirudh Sharma**  
Stoney Creek  
Univ. of Michigan



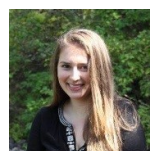
**Romy Sharma**  
Adams  
Univ. of Michigan



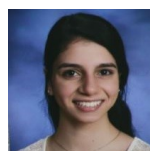
**Upamanyu Sharma**  
Rochester  
Univ. of Michigan



**Jack Siwajek**  
Adams  
Purdue Univ.



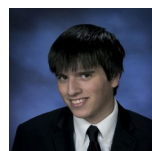
**Katharine Smyth**  
Adams  
Univ. of Michigan



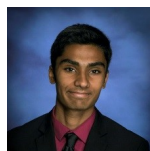
**Rashna Soonavala \***  
Rochester  
Univ. of Michigan



**Alexandra Stevens \***  
Adams  
Case Western Reserve



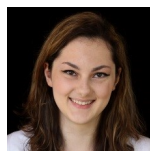
**Christopher Stowell**  
Stoney Creek  
Univ. of Michigan



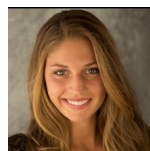
**Shyam Sudheendra**  
Stoney Creek  
Univ. of Michigan



**Aashika Sulabelle**  
Adams  
Univ. of Michigan



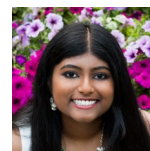
**Rachel Sullivan \***  
Adams  
Miami Univ.



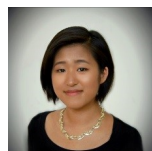
**Alexa Tomlak**  
Stoney Creek  
Univ. of Alabama



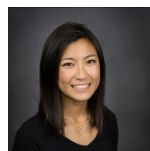
**Andrea Valdes**  
Rochester  
Minneapolis College of  
Art & Design



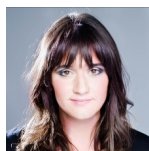
**Manisha Vupputuri \***  
Stoney Creek  
Univ. of Michigan



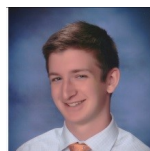
**Alicia Wang**  
Rochester  
Univ. of Michigan



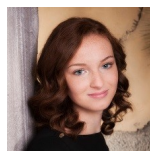
**Melyssa Wei \***  
Adams  
Univ. of Michigan



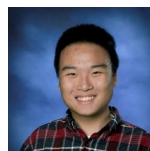
**Rachele Willard \***  
Stoney Creek  
Univ. of Michigan



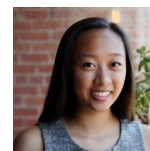
**Jeremy Wink**  
Stoney Creek  
Univ. of Michigan



**Candace Wiwel**  
Stoney Creek  
Univ. of Michigan



**Geoffrey Yang**  
Stoney Creek  
Univ. of Michigan



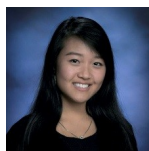
**Kimberly Yang**  
Stoney Creek  
Univ. of Michigan



**Jessica Yin \***  
Stoney Creek  
Univ. of Michigan



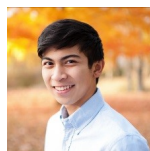
**Melissa Young**  
Adams  
Undecided



**Joyce Yu \***  
Stoney Creek  
Univ. of Michigan



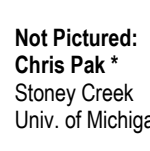
**Anne Zhao**  
Adams  
Univ. of Michigan



**Matthew Zabat**  
Stoney Creek  
Univ. of Southern  
California



**Jacob Zysnarski**  
Stoney Creek  
Michigan Tech.



**Lucy Harris**  
Adams  
Undecided

**Not Pictured:**  
**Chris Pak \***  
Stoney Creek  
Univ. of Michigan





# Rochester Community Schools Foundation

The Rochester Community Schools Foundation, a charitable 501(c)3 organization, is committed to supporting the advanced learning of all RCS students by obtaining contributions for academics, arts, and athletics.

Since its inception in 1995, the RCS Foundation has raised more than \$10 million. District teachers and staff can request funds twice a year to support a program or activity which will enhance the learning environment for their students. High school seniors can also apply for continuing education assistance through the scholarship program. Last year, in a partnership with the Community Foundation of Greater Rochester, the Kiwanis Club of Rochester and the Rochester Rotary Club, more than 85 scholarships were awarded to RCS students.

For the past two years, the RCS Foundation also sponsored many of the District's global awareness initiatives.

The following scholarships are provided through the RCS Foundation: Alice G. Horter, Amy Aplin Memorial Endowment, Daniel P. Hickey, Erin Grobbel Memorial, Hayes Family Memorial, John M. Schultz, Judith Freund, Judith K. Long, Laura Jermyn, Leslie Gouldey Memorial, PTA Council, RCS Foundation, Rochester High Athletic Boosters, Rochester High School Swim and Dive, Susan Jarrell Memorial, Susan Thomasson "Heart for Service."

Please call **248-726-3190**  
to learn how you can help  
support student achievement in  
Rochester Community Schools.



Pat Piskulich, Ph.D., President, Board of Education, Marie Pino, Karen Carl, Shelley Moore, Kristin Daugherty, John Pino, and Robert Shaner, Ph.D., Superintendent.

## Excellence in Education

The Excellence in Education Award was developed by the RCS Foundation in 1997 to recognize exemplary performance throughout the district. The award is funded through a generous donation by Marie and John Pino of the Pino Insurance Agency. Award dollars are used to purchase materials or services to enhance a school district classroom or facility. This year's winners are Karen Carl, Technology Facilitator, Rochester High and Reuther and West Middle Schools; Shelley Moore, Science Teacher, Reuther Middle School; and Kristin Daugherty, Counselor, Hart Middle School.

## Why do you serve?

### Excerpts from the Board of Education

"I am a parent of two RCS graduates and three more RCS students and our family believes you give back to something that has given you so much. I think others should consider serving if they have a heart for improving society by preparing children to thrive and lead in that society." **Sandy Fiaschetti, Ph.D., Vice President**

"I believe education transforms human lives. Every day people in our district impact students in ways that can change their life trajectory. I want to make sure the educational enterprise stays focused on students and that our decisions are guided by what is best for them. It's a privilege and a responsibility I don't take lightly." **Beth Talbert, Trustee**

"Life is short; we all should take the time we have to do one thing that leaves a footprint for others to someday follow."

**Kristin Bull, Treasurer**

"I believe that education is fundamental to the success of individuals. A premier school district requires continuous study, financial oversight and collaboration with parents and community members to be able to provide the best quality of education available."

**Jennifer Berwick, Trustee**



Kristin Bull, Kevin Beers, Sandy Fiaschetti, Pat Piskulich, Beth Talbert, Mike Zabat, and Jennifer Berwick

"Public service is about Us not Them, We not Me."

**Pat Piskulich, Ph.D., President**

"I serve to repay a debt of gratitude to a community and country that took me in and gave me the opportunity to raise a family and lead a happy life. I don't know if everyone can serve, but it is important for everyone to participate in civic life because the degree of our civic engagement determines the success of our community's outcomes (in education, crime prevent, growth, etc.) as well as our county's democracy as a whole."

**Mike Zabat, Secretary**

"Knowing that we, as a board, in cooperation with parents, teachers, and administrators, have an opportunity to positively impact the lives of our students is at once humbling and energizing."

**Kevin Beers, Trustee**

# Budget Overview

## A message from the Board of Education

The Board of Education recognizes that the quality of our schools and the stability of our district remain strong influencing factors in parents' decisions to choose the greater Rochester area for their home and to entrust their children's educational future to our care.

Over the past year, we have made some very difficult, but strategic decisions to preserve the educational and fiscal structure of our district. Our determination to focus on the strategic plan continues to pay dividends. The district aligned expenditures with available resources and delivered a balanced budget, eliminated our line of credit, upgraded our credit rating, and passed a bond initiative – all while continuing to deliver high quality programs and instruction to our students.

As we look to the 2016-17 school year, we are committed to adopting a balanced and equitable spending plan that is sustainable, promotes growth, and ensures high quality student programming.

There are several factors that the district takes into consideration when developing a budget. They include budget proposals presented by the House of Representatives, Senate, and the Governor's office, student enrollment fluctuations based on projections, employee costs, and the outcome of staffing and operational efficiencies.

Other influencers in this year's budget planning include strategic priorities to expand the world language program, replace and upgrade textbooks, replace and implement the district's student information database, and replace essential maintenance equipment. These are expenditures which are not covered by the bond effort.

Our ability to accomplish the goals set by our strategic plan requires fiscal stewardship that ensures our expenditures align with available revenue in a manner that is sustainable. This includes ensuring that the district's fund balance is at least 10% of the general fund expenditure budget as prescribed by district policy.

## 2016-2017 Budget

### Highlights

- No reductions in programs or services.
- An adopted balanced preliminary budget.

### General Fund Assumptions

- An increase of \$88 per student in foundation allowance.
- Consistent funding for categorical grants.
- No change in 147a MPSERS (Michigan Public School Employee Retirement System) cost offset.
- 147c MPSERS UAAL rate stabilization (Increases allocation to \$982.8 million to cover retirement costs above 24.9% capped rate.)

### Other Assumptions

- Estimated 13% increase in medical plan costs.
- Estimated cost savings from attrition.
- Alignment of staffing with enrollment.
- Changes in custodial and transportation contracts.
- Increase for textbooks, student database software, and maintenance equipment purchases.

Source: Board of Education presentation  
6.20.16

The 2016 debt fund millage rate required to support principal, interest, abated taxes and servicing costs of previously voter-approved bond debt is 5.9 mills, which is a 0.3 mill reduction from 2015-16.

The general fund budget in its broadest terms is outlined below (amounts are in millions).

|  | 2014-15 Actual | 2015-16 Amended | 2016-17 Proposed |
|--|----------------|-----------------|------------------|
| Revenue                                    | \$161.3        | \$165.4         | \$165.8          |
| Expenditures                               | 159.9          | 165.1           | 165.2            |
| Surplus (Deficit)                          | 1.4            | .3              | .6               |
| Ending Fund Balance                        | 16.1           | 16.5            | 17.1             |
| Ending Fund Balance as a % of Expenditures | 10.10%         | 10.01%          | 10.36%           |

Rochester Community Schools does not discriminate on the basis of race, color, religion, national origin, creed or ancestry, age, sex, marital status, height, weight, familial status, arrest record or physical and mental disabilities in accordance with the Elliot-Larson Civil Rights Act (ELCRA) MCL 37.2206, Persons with Disabilities Civil Rights Act (PWCRA), MCL 37.1206, Title II, Title VI, and Title VII of the Civil Rights Act of 1964, Title IX of the Educational Amendment Act of 1972, the Age Discrimination in Employment Act and the Immigration Reform and Control Act of 1986 (8U.S.C., Section 1324A Et.Seq.) and Section 504 of the Rehabilitation Act of 1973. In addition, individuals will not be excluded from, or be denied, the benefits of participation in any program or activity for which the Board is responsible. Rochester Community Schools has designated the following individuals as Compliance Coordinators: Title IX, Title II and Section 504 – Students: Assistant Superintendent for Instruction, 501 W. University, Rochester, MI 48307 (248)726-3106; Equal Employment Opportunity/Section 504 for non-students: Chief Human Resource Officer, 501 W. University, Rochester, MI 48307 (248)726-3110.



Rochester Community Schools  
501 W. University Drive  
Rochester, MI 48307  
248.726.3000  
www.rochester.k12.mi.us

Non-Profit Org.  
U.S. Postage  
**PAID**  
Rochester, MI  
Permit No. 6

## POSTAL PATRON ROCHESTER COMMUNITY SCHOOLS

# 2016-17 District Calendar

|   |  |
|---|--|
| <b>August</b><br>24-25 New Teacher Orientation<br>29 Teachers Report<br>29 Elementary World of Welcome<br>30-31 Professional Development  | <b>February</b><br>20-21 Midwinter break, No School (K-12 & Post High)<br>21 Professional Development<br>22 Classes Resume (K-12 & Post High)  |
| <b>September</b><br>6 Full Day of School for Students (K-12 & Post High)  | <b>March</b><br>1 Evening Conferences (6-8)<br>2 Evening Conferences (9-12)<br>8 Evening Conferences (9-12)<br>9 Evening Conferences (6-8)<br>10 No School for Students (K-12 & Post High)<br>Professional Development<br>31 Spring Recess Begins at End of Day (K-12 & Post High)   |
| <b>October</b><br>6 Evening Conferences (6-8)<br>10 No School for Students (K-12 & Post High)<br>Professional Development<br>13 Evening Conferences (9-12)<br>18 Evening Conferences (6-8)<br>19 Evening Conferences (9-12)   | <b>April</b><br>10 Classes Resume (K-12 & Post High)<br>11 College Entrance Testing, grades 9 & 11<br>(lengthened half-day)<br>No students, grades 10 & 12<br>Full Day, K-8<br>12 MME and PSAT Testing, grades 10 & 11<br>Late arrival, grades 9 & 12<br>Full Day, K-8<br>13 Work Keys Testing, grade 11<br>Late arrival, grades 9, 10 & 12<br>Full day, K-8<br>End of Marking Period 3<br>14 No School (K-12 & Post High)<br>17 Begins Marking Period 4<br>19 Evening Conferences (K-5)<br>27 Evening Conferences (K-5) |
| <b>November</b><br>4 End of Marking Period 1<br>7 No School for Students (K-12 & Post High)<br>Professional Development<br>8 Election Day, No School (K-12 & Post High)<br>Professional Development<br>9 Evening Conferences (K-5)<br>15 Evening Conferences (K-5)<br>17 Evening Conferences (K-5)<br>22 Thanksgiving Recess Begins at End of Day<br>(K-12 & Post High)<br>28 Classes Resume (K-12 & Post High) | <b>May</b><br>29 Memorial Day Holiday, No School (K-12 & Post High)  |
| <b>December</b><br>21 Winter Recess Begins at End of Day (K-12 & Post High)   | <b>June</b><br>15 Half Day for Students, AM Exams (6-11 & Post High)<br>16 Half Day for Students, AM Exams (6-11 & Post High)<br>Half Day for Students (K-5)<br>End of Marking Period 4, Semester 2,<br>Last day of the 2016-17 School Year  |
| <b>January</b><br>4 Classes Resume (K-12 & Post High)<br>16 MLK Jr. Holiday, No School (K-12 & Post High)<br>26 Half Day for Students, AM Exams (6-12 & Post High)<br>27 Half Day for Students, AM Exams (6-12 & Post High)<br>No School for Students (K-5)<br>End of Marking Period 2, Semester 1<br>30 Beginning of Marking Period 3, Semester 2  |  |

\* Please note that any potential future changes to the Oakland Schools calendar may affect the above dates.