

ROCHESTER COMMUNITY SCHOOLS

PRIDE IN EXCELLENCE

Learning Forward Updates

December 14, 2020



Timeline

- June 2** Dr. Shaner appointed to the governor's COVID-19 Return to School Advisory Council
- June 30** Back-to-school safety requirements released in MI Safe Schools: Michigan's 2020-21 Return to School Roadmap.
- July 27** Members of the RCS task force present complexities and contingencies surrounding learning options during a Board of Education work session.
- July 28** Community town hall meetings address districtwide feedback with input provided through ThoughtExchange.
- Aug. 5** Families are notified that in-person learning will temporarily begin in a remote-learning environment. "Our vision is to transition back to in-person learning as conditions allow. We anticipate being in the remote environment until October 1."
- Aug. 15** School districts are required to submit a Preparedness and Response Plan for the 2020-21 school year, approved by the local school district board and then posted on the website.
- Aug. 20** School districts are required to submit an Extended COVID-19 Learning Plan to the state by Oct. 1 (in addition to the Preparedness and Response Plan) that has been approved by the Board of Education.
- Aug. 26** School-age care needs assessment provided to the community.



Timeline: Phased-in Approach to In-person Learning

- Sept. 1** RCS students start school remotely (for in-person instruction) or in the RCS Virtual Campus.
- Sept. 3** MHSAA reinstated fall sports / RCS phased in high-school athletics, starting Sept. 8.
- Sept. 14** Special Education teams begin offering in-person student evaluations within the week.
- Sept. 21** Middle school athletics resume within the week.
- Sept. 22** General education pre-K programs begin.
- Sept. 28** RCS presents the district's extended COVID-19 Learning Plan to the Board for approval.
- Oct. 5** Some students enrolled in special education programs attend half day, starting Oct. 5. Programs include Early Childhood Special Education (ECSE), Autism Spectrum Disorder (ASD), Cognitive Impairments (CI), Severe Multiple Impairments (SXI), Emotional Impairments (EI), and Adult Transition Programs and Services (ATPS).
- Oct. 8** Elementary students attend half day by cohorts. Cohort A: Half-day, in-person instruction; Cohort B: Asynchronous learning.
- Oct. 9** Elementary students attend half day by cohorts. Cohort A: Asynchronous learning; Cohort B: Half-day, in-person instruction.
- Oct. 12** All elementary and middle school students return full day by cohort. Some special education students enrolled in ASD, CI, SXI, and EI programs attend full day.
- Oct. 14** High-school seniors attend for SAT testing.
- Oct. 19** All high school students attend by cohort.
- Oct. 26** Facility rentals begin, starting with swimming pools.



Timeline

- Oct. 26** RCS presents the district's extended COVID-19 Learning Plan to the Board for approval.
- Nov. 2, 3, 11, 12, 17** Technology device deployment
- Nov. 5** Students enrolled in transitional kindergarten through 12th grade (TK-12) in-person learning, ECSE, and ATPS return to an enhanced remote learning environment due to the Oakland County Health Division (OCHD) risk level determination. In-person enrichment programs pause until in-person learning resumes. Pre-K programs pause.
- Nov. 9** In-person pre-K programs resume.
- Nov. 15** MDHHS announced new statewide restrictions: Public and private high school students will learn in a remote environment from Nov. 18 through Dec. 8. All organized sports and extra-curricular activities will be postponed Nov. 16 through Dec. 8. This includes all in-person activities at the middle- and high-school levels.
- Nov. 18** COVID-19 Preparedness Response Plan is revised to reflect new guidance from the Michigan Occupational Safety and Health Administration (MIOSHA) regarding remote work.
- Nov. 19** RCS informs families that the district will continue to serve children in a remote learning environment through Friday, Jan. 15, 2021.
- Nov. 30** RCS presents the district's extended COVID-19 Learning Plan to the Board for approval.
- Dec. 14** RCS presents the district's extended COVID-19 Learning Plan to the Board for approval.



OCHD Guidance

Oakland County Health Division
(OCHD)

Guidance for in-person instruction

Received Sept. 24, 2020

		SCHOOL BUILDING SPREAD INDICATORS		
		No cases in school building	Building(s) with known cases in staff or students but no ongoing transmission	Building(s) with evidence of ongoing transmission
COUNTY LEVEL RISK DETERMINATION	LOW RISK	In person allowed with mitigation measures	In person allowed with strict mitigation measures after cleaning/contact tracing	In person allowed with strict mitigation in affected buildings with cases after an appropriate pause
	A	In person allowed with strict mitigation measures	In person allowed with strict mitigation measures after cleaning/contact tracing	In person allowed with strict mitigation in affected buildings with cases after an appropriate pause
	B	In person allowed with strict mitigation measures	In person allowed with strict mitigation measures after cleaning/contact tracing	Consider reduced density in affected buildings with cases after an appropriate pause
	C	In person allowed with strict mitigation measures	Consider reduced density in affected buildings after cleaning/contact tracing	Consider reduced density in affected buildings with cases after an appropriate pause
	D	Consider reduced density allowed with strict mitigation measures	Consider reduced density affected buildings after cleaning/contact tracing	Consider remote instruction in the affected building for 28 days
	E	Consider pausing (14 days) in person instruction in entire district to discuss protection strategies including but not limited to testing	Consider remote instruction in entire district	Consider remote instruction in entire district

● <7 cases per million;
<3% percent positivity

● 7 to <20 cases per million;
3 to <7% percent positivity

● 20 to <40 cases per million;
7 to <10% percent positivity

● 40 to <70 cases per million;
10 to <15% percent positivity

● 70 to <150 cases per million;
15 to <20% percent positivity

● 150 or greater cases per million;
20 or greater percent positivity



Local Health Department and School District Guidance

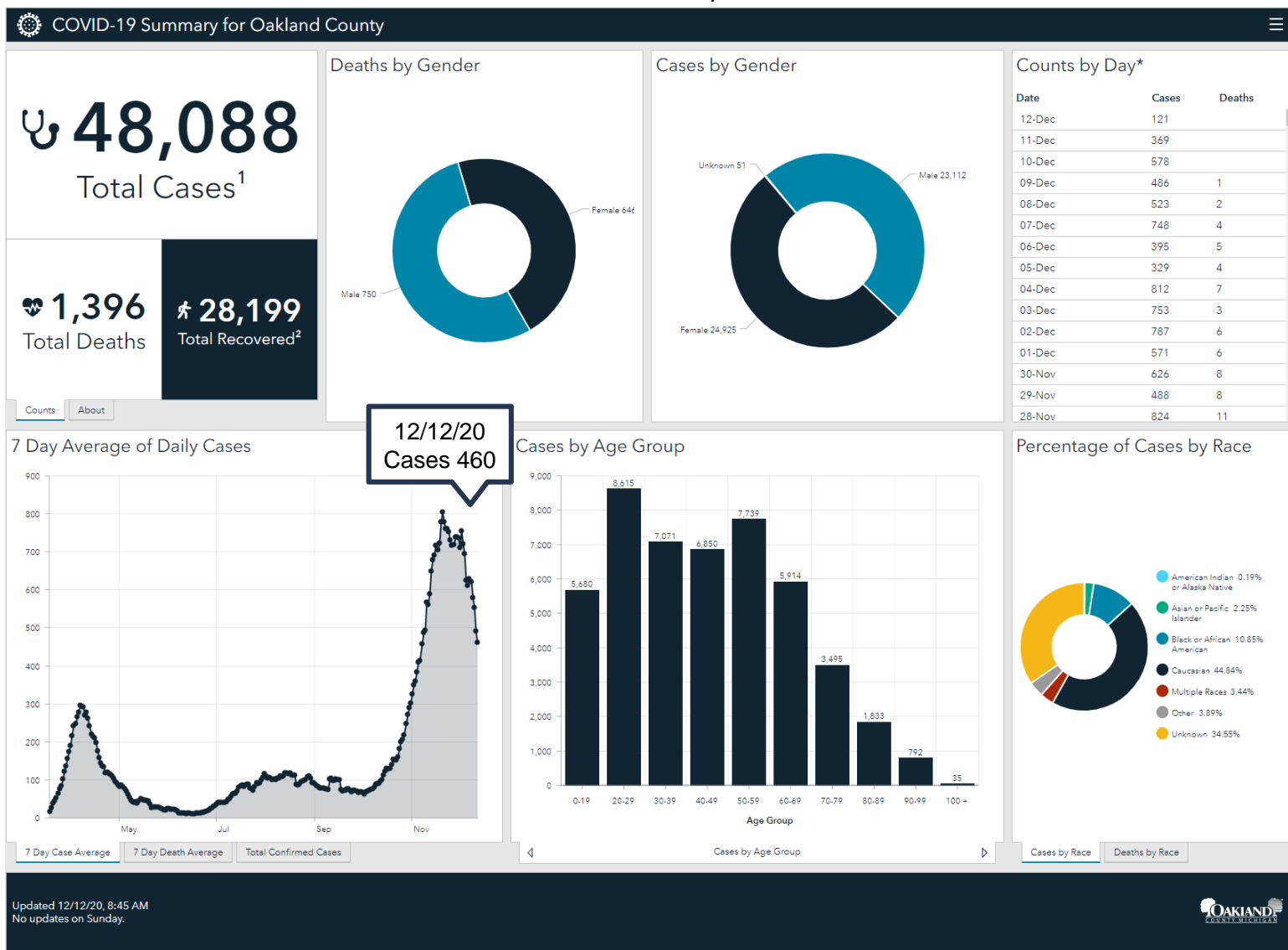
- Low risk: <7 COVID-19 cases per million people in county or <3% percent diagnostic tests are positive
- A Medium risk: 7 to <20 COVID-19 cases per million people in the county or 3 to <7% percent diagnostic tests are positive
- B Medium-High risk: 20 to <40 COVID-19 cases per million people in the county or 7 to <10 percent diagnostic tests are positive
- C High risk: 40 to <70 COVID-19 cases per million people in the county or 10 to <15 percent diagnostic tests are positive
- D Very High risk: 70 to <150 COVID-19 cases per million people in the county or 15 to <20 percent diagnostic tests are positive
- E Highest risk: 150 or more cases per million people in the county or 20 or greater percent diagnostic tests are positive

**School officials make decisions based on available data and science
provided by state and county health divisions**



COVID-19 Summary for Oakland County (from MDHHS)

December 12, 2020





COVID-19 Oakland County Schools Weekly Report

December 9, 2020

Reporting period: November 25 – December 8			
METRIC	RESULT	Trend	DEFINITION
Total “Confirmed and Probable” COVID-19 Cases Reported in Oakland County	8665	↓	“Confirmed”: laboratory-confirmed positive molecular viral test “Probable”: rapid-antigen positive viral test
Cases/Day per Million Population 7-Day Average 14-Day Average	480 514	↓	Average number of cases per day per million population over the given timeframe
14-Day Average Daily Case Counts	619	↓	The average number of cases per day reported over the last 14 days of the reporting period
14-Day Average Daily Death Counts	0.71	↑	The average number of deaths per day reported over the last 14 days of the reporting period
14-Day Average Tests Per Day	6440	↓	The average number of diagnostic tests administered to Oakland residents over the last 14 days of the reporting period
Percentage of Cases Hospitalized in the Last 14 Days	1.4%	→	The percentage of cases (confirmed and probable) that reported being hospitalized over the last 14 days of the reporting period
Percent Positivity (7 days)	12.66%	→	Percentage of reported positive tests over the last 7 days (December 2 – December 8)
Percent Positivity (28 days)	13.23%	→	Percentage of reported positive tests over the last 28 days (November 11 – December 8)
Healthcare Capacity Strength	BELOW CAPACITY	TREND ↓	Assessment of bed availability and hospital capacity
Testing, Tracing, Containment Infrastructure	STRONG	→	Assessment of testing availability and OCHD contact tracing capability
County Level Risk Determination	E	→	County level risk determination based on state guidance. Local epidemiology is also a factor in school and district-specific decision making

Weekly COVID-19 Report

Oakland County Schools



Total Oakland County Cases Reported by Age Group					
Age Group	Total Cases	Trend	Age Group	Total Cases	Trend
0-4	85	→	50-59	1450	↓
5-9	130	↑	60-69	1046	↓
10-13	151	↓	70-79	513	↓
14-18	424	→	80-89	228	→
19-29	1786	↓	90+	88	→
30-39	1440	↓	Unknown	30	
40-49	1294	↓			

The number of reported cases decreased 857 cases from last week. Percent positivity over the last 7 days was similar to last week. The number of tests per day over 14 days decreased about 670 tests per day. The average daily deaths counted increased slightly this week. Generally, cases in each age group decreased or stayed stable, save the 5-9 age group which increased 14 cases.



RCS COVID-19 Data

- **Positive cases, from July 1, 2020 to Dec. 10, 2020:**
RCS had 134 positive cases, as confirmed by the OCHD. This includes 53 staff and 81 students.
- **Quarantine, from Oct. 5, 2020 (when students began reporting) to Dec. 14, 2020:**
RCS had 786 individuals quarantine as a result of a close contact. This includes 126 staff and 660 students.
- **Isolation, from Oct. 5, 2020 (when students began reporting) to present:**
RCS has had 133 individuals isolate. This includes 122 staff and 11 students.
- Considering quarantine and isolation data, 919 students and staff could not report for work or school due to close contact or symptoms and were not/did not become positive cases.
- Two schools (RHS and AHS) were identified as having **ongoing transmission** within the building.



OCHD Definitions

- **Isolation** is for those who are sick with symptoms of COVID-19 and/or have tested positive for COVID-19.

Isolation begins on the day symptoms appear or the day the test was performed.

- **Quarantine** is for those who have been exposed through close contact to someone who has tested positive for COVID-19.

Quarantine begins on the day of the last known exposure.

- **Close contact** is within 6 feet for 15 minutes or more (cumulative over 24 hours).
- **Contact tracing** is a strategy for slowing the spread of disease in which public health workers communicate with infectious people to identify their contacts. They then follow up with those contacts to provide guidance on how to quarantine themselves and what to do if they develop symptoms of disease.

OCHD identifies close contacts within the school district at the school level to ensure all possible staff and students that have been exposed are excluded from school.



New Quarantine and Isolation Guidelines*

Isolation: 10 days (no change)

Quarantine: 14 days is “gold standard” because the incubation period of 14 days has not changed.

RCS will follow MDHHS and OCHD recommendations to adhere to the gold standard.

(New option: Quarantine may end on day 10 if NO symptoms, but the individual should continue monitoring for symptoms through day 14.)

MDHHS and OCHD do not endorse the 7-day test opt out option. Currently, an individual cannot test out of quarantine.

*Endorsed by MDHHS and OCHD



MDHHS COVID-19 Vaccine



**MDHHS goal:
To have 70% of Michigan adults
vaccinated by the end of 2021**

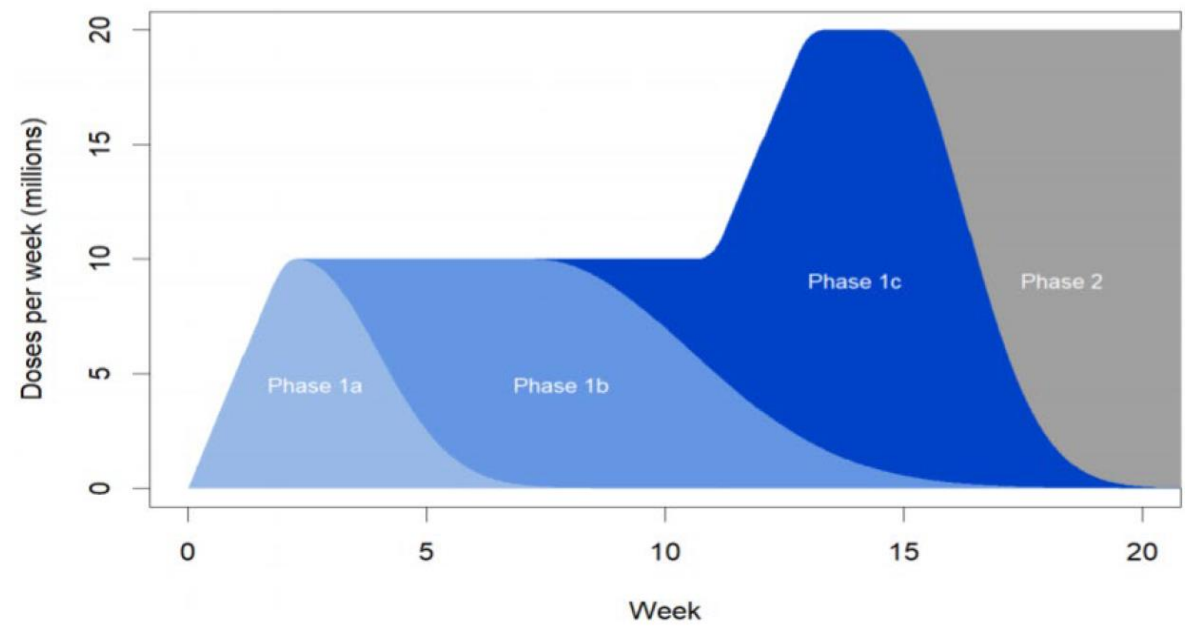
“A vaccine to prevent COVID-19 is the best hope for ending the pandemic.”
~MDHHS

Spread Hope
NOT COVID

*Information provided by the MDHHS on Dec. 9, 2020



COVID-19 Vaccine Goal and Approval Process



Phase 1a:	Health care professionals and Long-term Care Facility (LTCF) residents
Phase 1b:	Essential workers such as education sector, food and agriculture, utilities, police, firefighters, correction officers, and transportation
Phase 1c:	Adults with high-risk medical conditions
Phase 2:	Others

*Information provided by the MDHHS on Dec. 9, 2020



COVID-19 Vaccine



- Experts from the CDC's Advisory Committee on Immunization Practices are working on how to distribute these limited vaccines in a fair, ethical, and transparent way.
- There may be a limited supply of COVID-19 vaccines before the end of 2020, but MDHHS anticipates that supplies will continually increase in the months that follow.
- Learn more at www.Michigan.gov/COVIDVaccine
- MDHSS indicates that we will need to continue preventative measures such as wearing masks, social distancing, and handwashing to reduce the spread of COVID-19 in our communities.

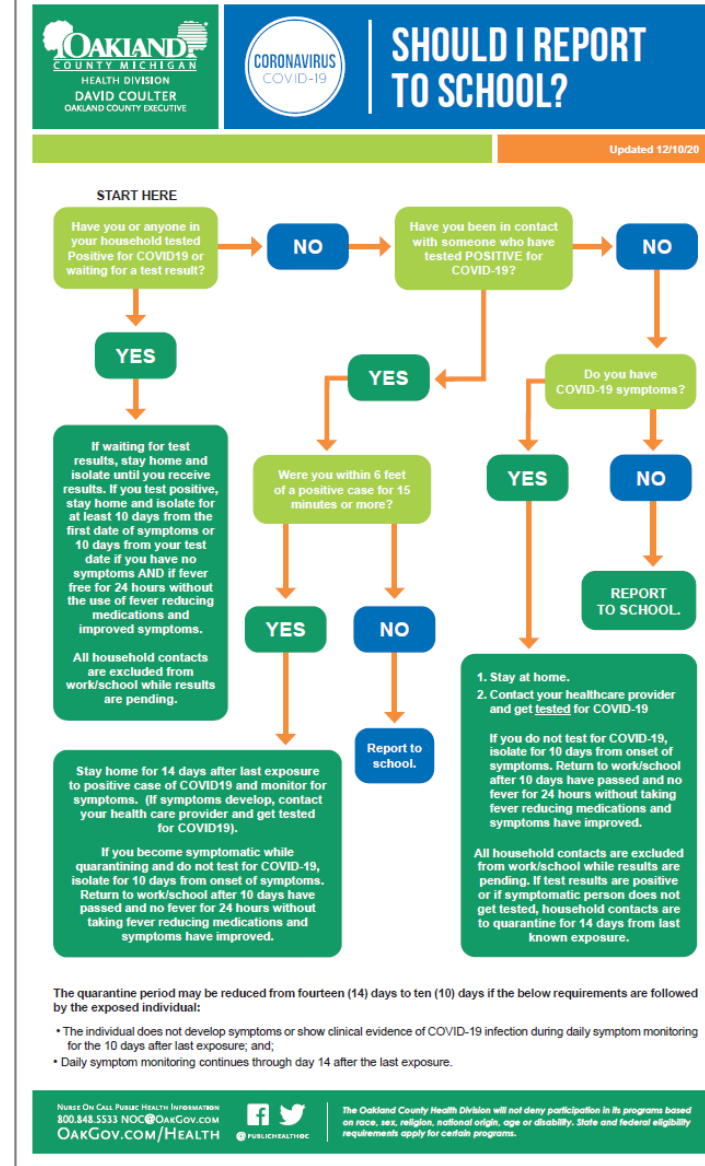
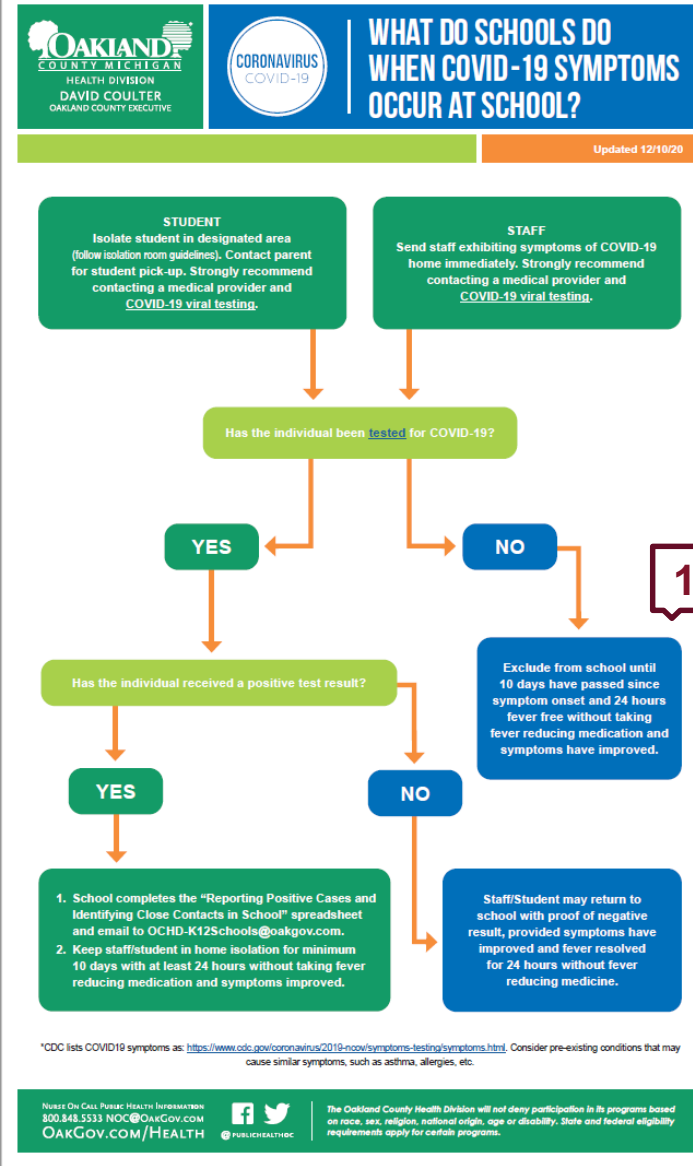


Updated OCHD Flow Charts

<https://www.oakgov.com/covid/resources/education/Pages/k-12.aspx>

Changes in guidance:

1. Alternative diagnosis does not provide clearance without a negative test.
2. Household contacts. If a person has COVID-19 symptoms, all household contacts are excluded from work/school while results are pending. If results are positive or if the symptomatic person is not tested, household contacts should quarantine for 14 days from the last known exposure.





OCHD Resources

- Public Health Toolkit for K-12 Schools, updated
<https://www.oakgov.com/covid/resources/education/Documents/Education%20Toolkit.pdf>
- Close Contact Quarantine Guide
<https://www.oakgov.com/covid/resources/signschecklists/Close-Contact-Quarantine-Guide.pdf>
- School Flow Charts, updated
<https://www.oakgov.com/covid/resources/signschecklists/CV19-School-Flow-Charts.pdf>



OCHD COVID-19 Drive Through Testing Sites

Available for anyone 18 years or older and children 4-17 years old. Child must have COVID-19 symptoms and be a resident of or attend school in Oakland County.

NO COST TESTING

- Appointment required
- No physician prescription needed
- Contact Nurse on Call at 1-800-848-5533 or noc@oakgov.com.

Monday, 9 a.m. - 5 p.m., Old Holly Fire Station
313 S. Broad St, Holly, MI

Tuesday, 9 a.m. - 5 p.m., Rochester Fire Station
277 E. Second St, Rochester, MI

Wednesday, 9 a.m. - 5 p.m., Southfield City Hall Employee Parking Deck
26000 Evergreen Rd, Southfield, MI

Thursday, 9 a.m. - 5 p.m., Pontiac Fire Station
348 South Blvd., Pontiac, MI

For more information, go to: WWW.OAKGOV.COM/COVID



Available for anyone 18 years or older and children 4 - 17 years old. Child must have COVID-19 symptoms and be a resident of or attend school in Oakland County.



Monday • 9 AM - 5 PM:
Old Holly Fire Station
313 S. Broad St • Holly, MI

Tuesday • 9 AM - 5 PM:
Rochester Fire Station
277 E. Second St • Rochester, MI

Wednesday • 9 AM - 5 PM:
Southfield City Hall
Employee Parking Deck
26000 Evergreen Rd • Southfield, MI

Thursday • 9 AM - 5 PM:
Pontiac Fire Station
348 South Blvd. • Pontiac, MI

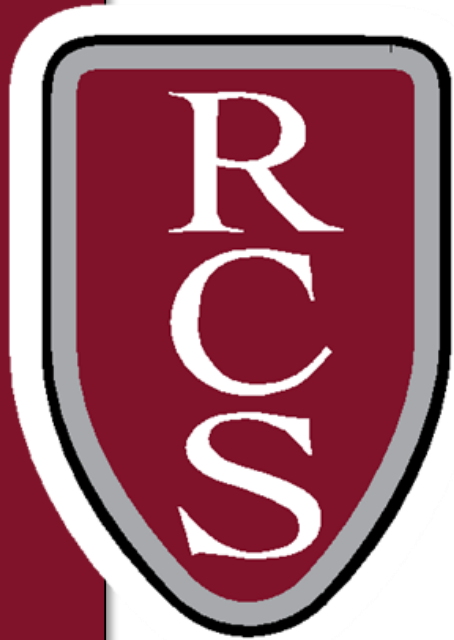


OAKGOV.COM/COVID

Need On Call Public Health Information?
800.848.5533 NOC@OakGov.com
OakGov.com/Health



The Oakland County Health Division will not deny participation in its programs based on race, sex, sexual orientation, gender identity, religion, national origin, age or disability. State and federal eligibility requirements apply for certain programs.
11/18/20



ROCHESTER COMMUNITY SCHOOLS

PRIDE IN EXCELLENCE

Operations and Facilities

Matthew McDaniel, CPA, Executive Director, Business Operations



Food Service

Consolidated pickup locations:

- Baldwin and Hugger pick up at Hugger Elementary
- Hart, North Hill, and Stoney Creek pick up at Hart Middle School
- ATPS, Long Meadow, and Rochester High pick up at Rochester High School
- Adams and Brewster pick up at Brewster Elementary
- Meadow Brook, University Hills, and West pick up at West Middle School
- Musson and Van Hoosen pick up at Musson Elementary

These schools will continue to pick up at their own buildings:

- Delta Kelly Elementary
- Hamlin Elementary
- Hampton Elementary
- McGregor Elementary



Food Service

Weekly distributions will continue on Wednesdays between 11:30 a.m. and 12:30 p.m.

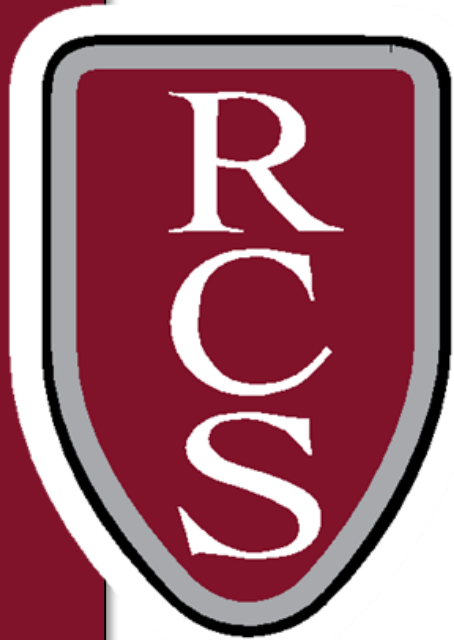
- December 16: 7 days of meals
- December 18: 7 days of meals
- December 23: No pickup
- December 30: No pickup
- January 6: 7 days of meals

If there are specific dietary questions or concerns, please call the Food Services office at (248) 726-4618, email focfoodservice@rochester.k12.mi.us, or use the Talk to RCS feature on the district's website at www.rochester.k12.mi.us.



Participation Rate

- Student participation for October and November was reported at the November 30, 2020, board meeting.
- Final participation results are being reviewed.
- Student participation rates will be shared at the January board meeting for the final week of November and month of December.



ROCHESTER COMMUNITY SCHOOLS

PRIDE IN EXCELLENCE

Learning Forward: Continuous Improvement

Carrie Lawler, Assistant Superintendent for Secondary Education

Todd Calcamuggio, Assistant Principal, Adams High School

Marnie Barker, Principal, Hugger Elementary School

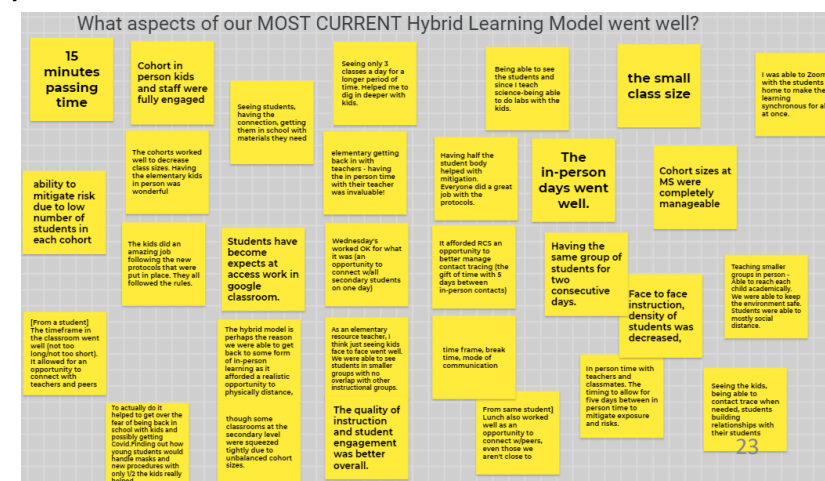
Kelly Dessy, Principal, Brewster Elementary School



The members worked in level groups to analyze committee feedback. Discussions focused on:

- The next meeting of the full committee is Jan. 5, 2021.

~Michael Fullan





Remote Learning Update - Assessments

- All elementary students will participate in benchmark assessment no matter the learning environment.
- Benchmark reading assessments can be done using Literacy Footprints digital reader assessment tools, or with Fountas & Pinnell kit and a document camera.
- iReady diagnostic is used as one piece of data to drive instructional decisions and also provide data on students' progress toward growth goals. On Dec. 14, elementary students received access to the math learning platform with support links.
- Formative assessments guide instruction: Best practice is for teachers to do frequent, ongoing formative assessment. Literacy Footprints digital reader and Epic are two resources teachers use for collecting data through informal running records or by observing reading behaviors in a one-to-one conference or small group setting. Teachers choose the platform that best meets their goals for digging deeper into a particular student or student group's needs.
- At the secondary level, we continue to work with MDE to collaborate and update processes. iReady assessments will be added at middle school level. MSTEP will be provided to 6th and 7th graders; the PSAT will be provided to 8th, 9th, and 10th graders; and the SAT will be given to 11th graders. All tests will be taken in April/May timeframe.
- Next meeting is on Jan. 7, 2021.